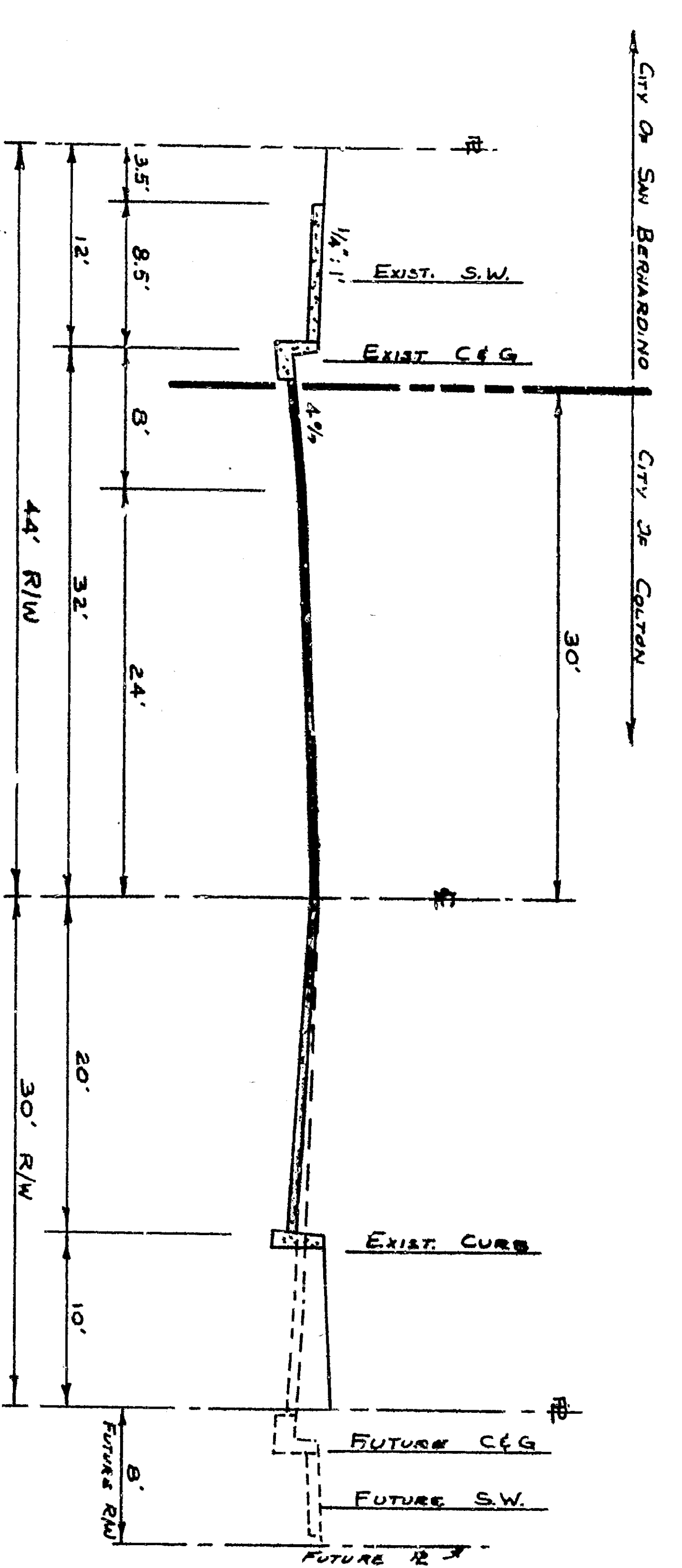
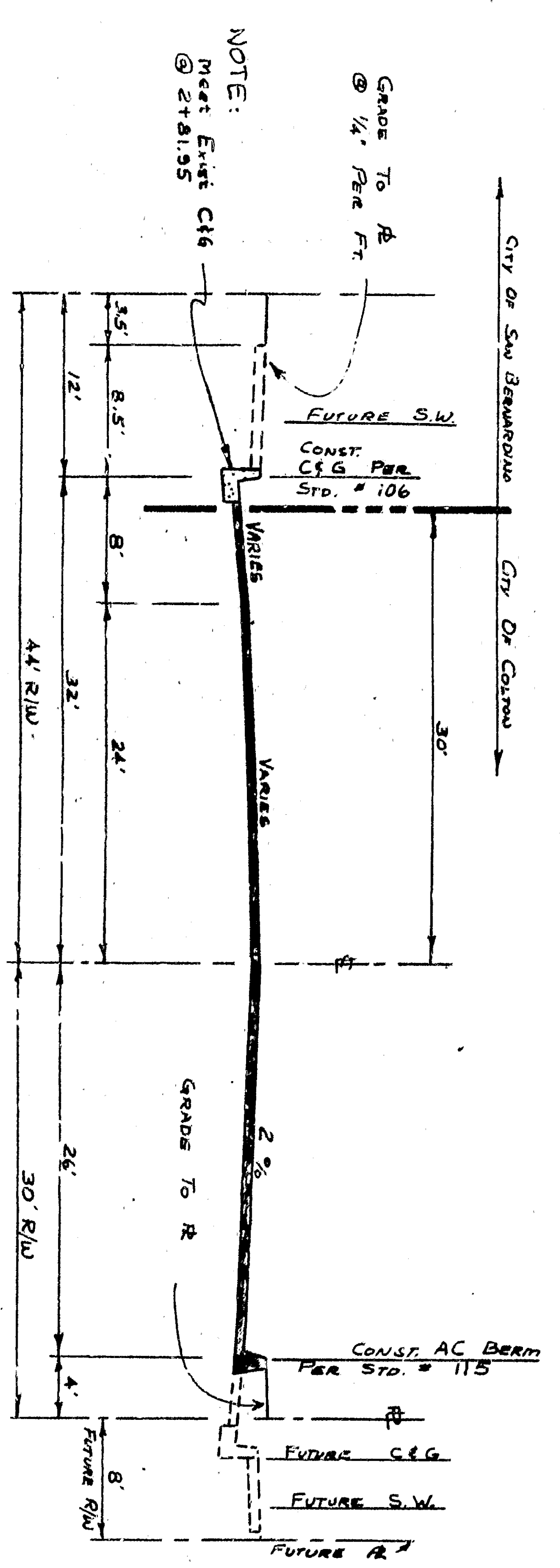


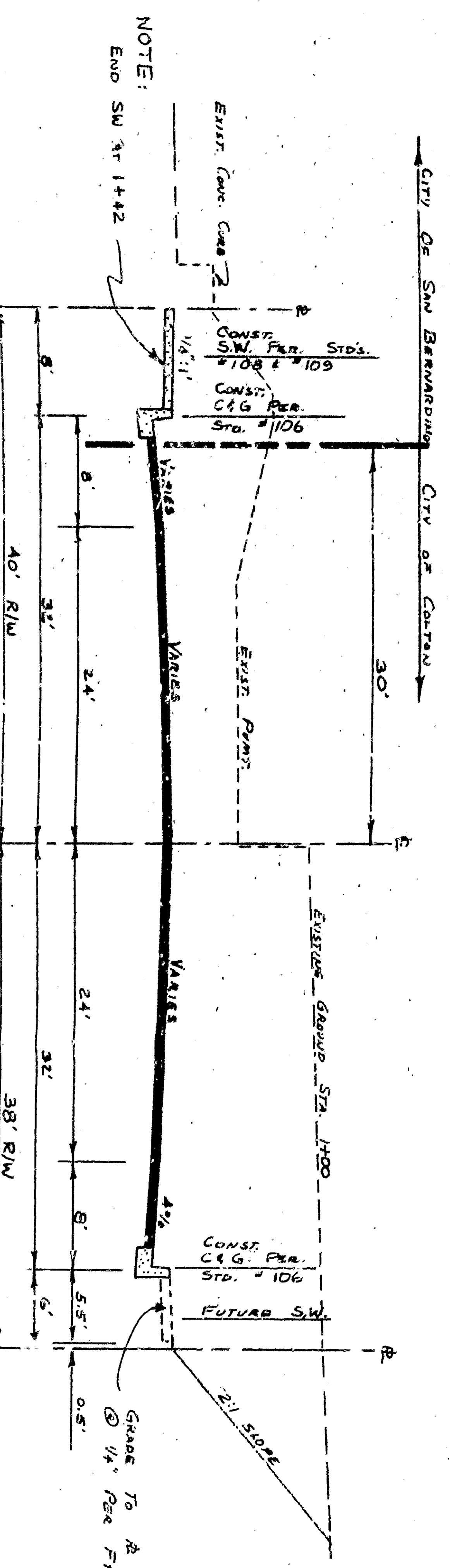
TYPICAL "X" SECTION



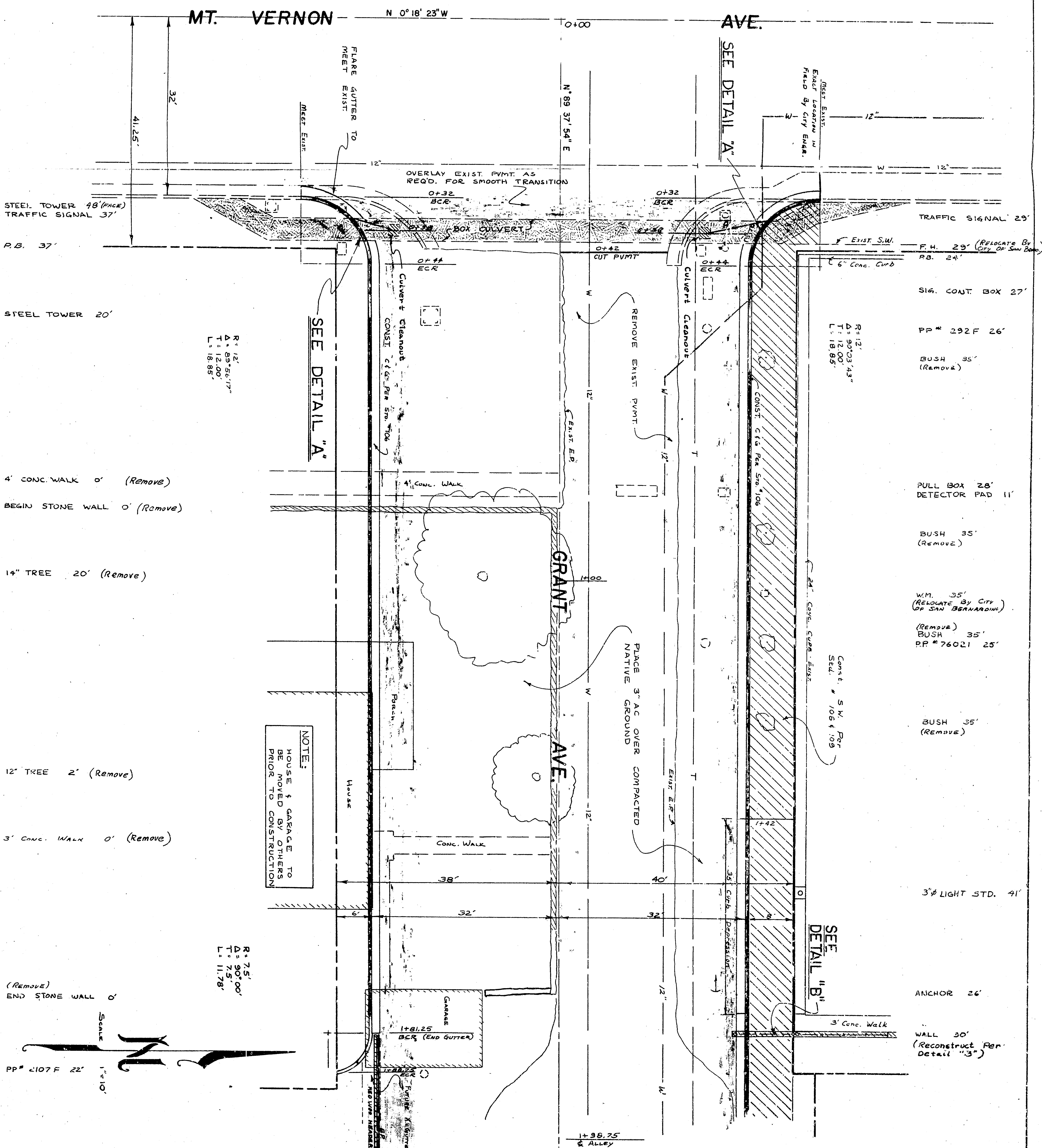
"X" SECTION
STA. 348628 TO STA. 349150
(NOT A PART OF THIS CONTRACT)



"X" SECTION
STA. 1489 TO STA. 348628



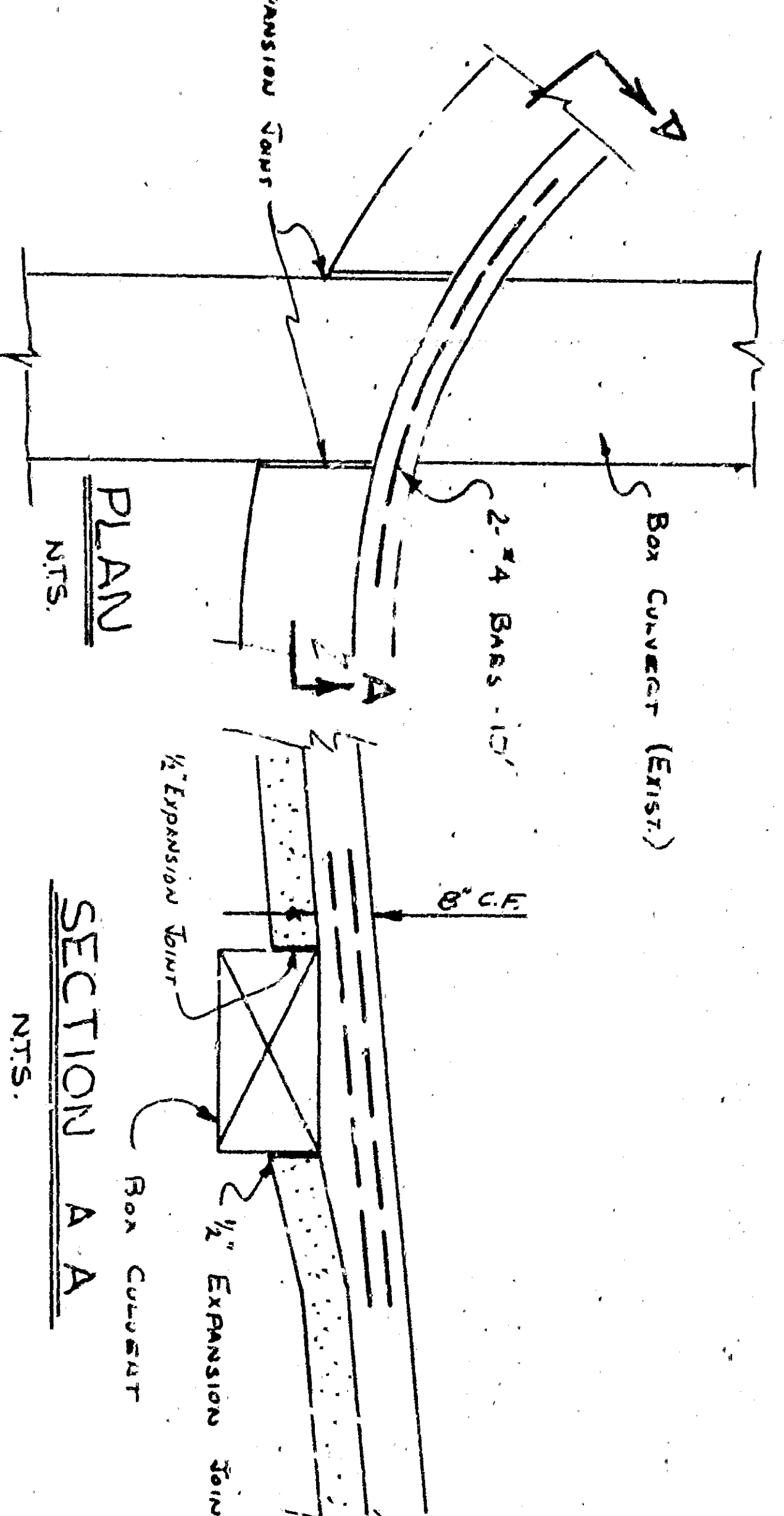
"X" SECTION
STA. 0100 TO STA. 1489



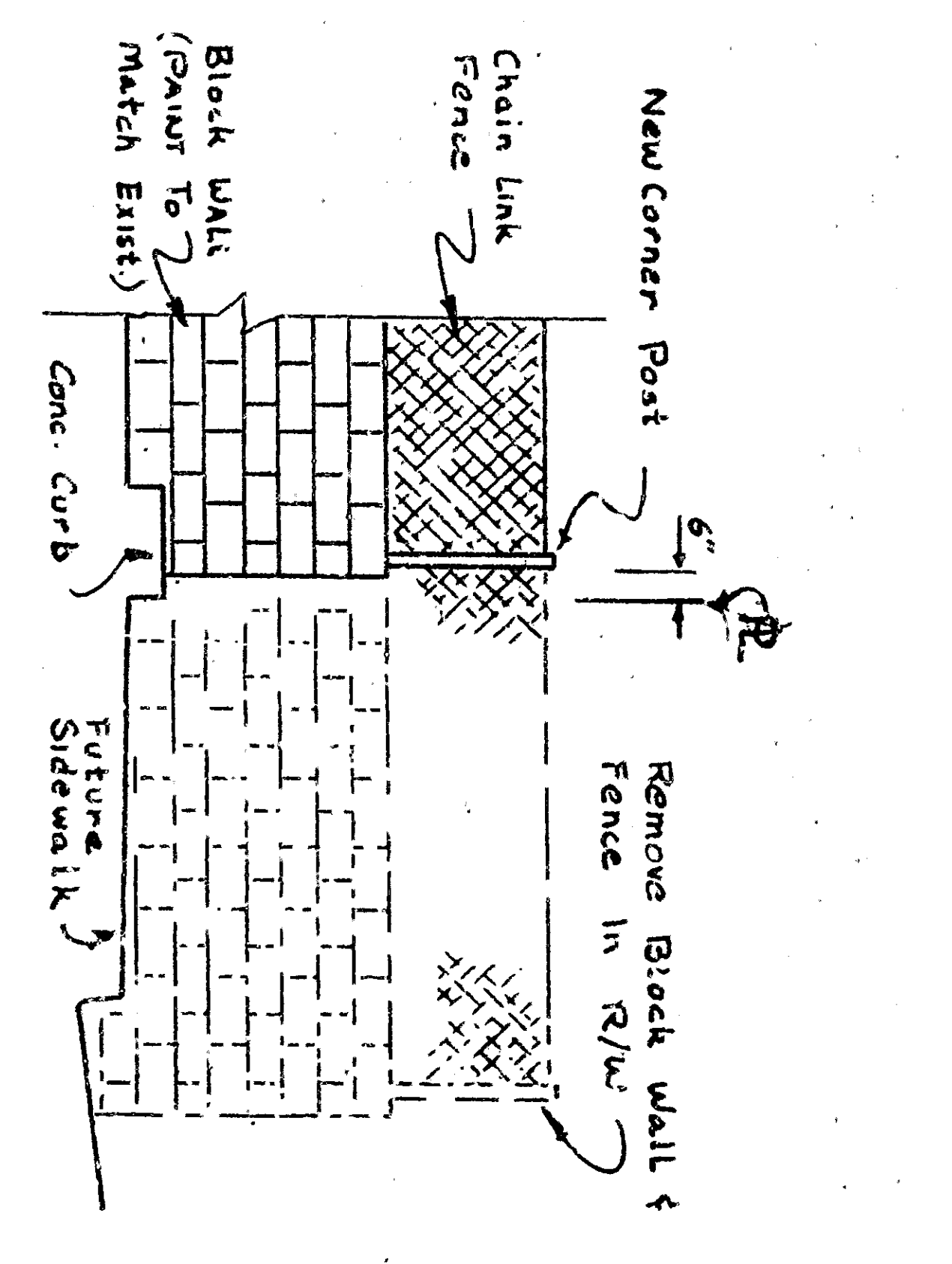
NOTE:
HOUSE & GARAGE TO
BE MOVED BY OTHERS
PRIOR TO CONSTRUCTION

R 75'
A 90'
T 75'
L 11.78'

Scale 1"=10'



DETAIL "A"
CURB AND GUTTER AT STA. 0+39 (BOX CULVERT)



DETAIL "B"
BLOCK WALL AT STA. 1+82

CITY OF SAN BERNARDINO
GAS TAX PROJECT NO. 338

APPROVED BY: *[Signature]*
CITY ENGINEER

CITY OF COLTON
ENGINEERING DIVISION

GRANT AVENUE
GAS TAX PROJECT NO. 95
MT. VERNON AVE. TO HOLLY DRIVE
PLAN NO. 1498

DRAWN BY: *[Signature]* DATE: 7/24/85
CHECKED BY: *[Signature]* DATE: 8/11/85
APPROVED BY: *[Signature]* DATE: 8/11/85

SCALE: 1"=10'

SHEET 2 OF 2